

DW SERIES MULTI-PURPOSE POWER LINE FILTERS



INTRODUCTION

Two-stage filters providing excellent suppression at high frequency.

COMPONENTS

PART NO.	C1 (uF)	C2 (uF)	L1 (mH)	L2 (uH)	Cy (pF)	R (Ω)
03DWCG5	0.22	0.22	1.0	30	3300	330K
06DWCG5			1.7	70		
10DWCG5			1.2	40		
20DWGG5			1.73	30		

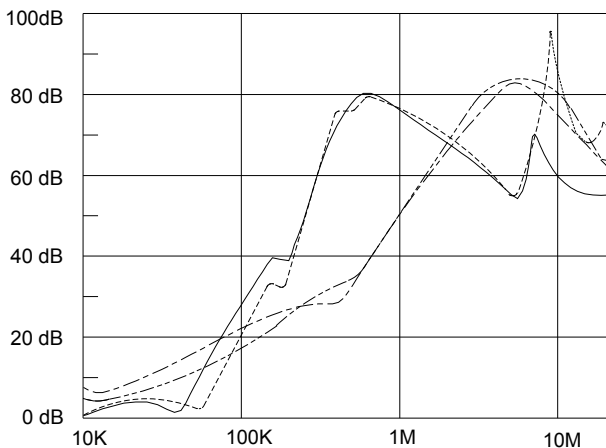
MINIMUM INSERTION LOSS IN dB

COMMON MODE (L-G) IN 50 OHM SYSTEM							
CURRENT RATING	FREQUENCY-MHz						
	.15	.50	1.0	5.0	10	30	
3A	12	25	30	60	60	45	
6A	25	30	45	55	55	45	
• 10A	15	20	30	60	55	45	
• 20A	20	25	30	55	55	45	
DIFFERENTIAL MODE (L-L) IN 50 OHM SYSTEM							
3A	30	50	60	50	45	40	
6A	25	35	50	45	46	45	
• 10A	25	50	50	45	10	30	
• 20A	25	55	55	55	50	45	

• VDE approved in 8A
• VDE approved in 16A

INSERTION LOSS (TYPICAL)

03DWCG5 --- COMMON MODE --- DIFF. MODE
06DWCG5 --- COMMON MODE --- DIFF. MODE



SPECIFICATIONS

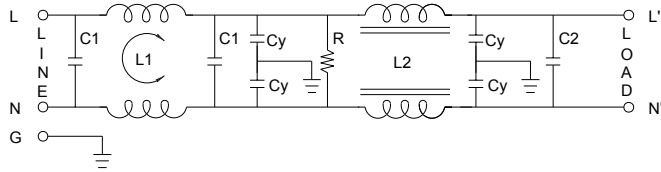
- Maximum leakage current each line-to-ground: @ 115VAC 60Hz: 0.50mA
@ 250VAC 50Hz: 1.00mA
- Hipot rating (one minute) line-to-ground: 2250VDC
line-to-line: 1450VDC
- Operating frequency: 50/60Hz
- Rated voltage: 115/250VAC

SERIES DIMENSIONS

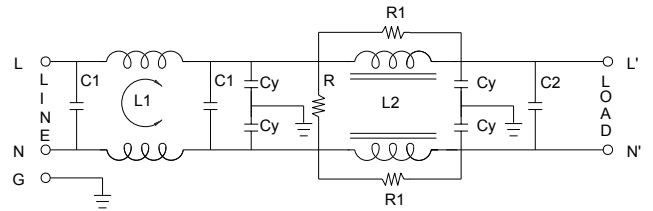
PART NO.	DIMENSIONS IN INCHES/mm				
	A	B	C	D	E
03DWCG5	3.25	1.90	1.15	2.38	2.77
	82.5	48.3	29.2	60.5	70.4
06DWCG5	3.75	2.06	1.54	2.94	3.34
10DWCG5	95.2	52.3		74.7	84.8
20DWGG5	5.25	3.40	39.1	3.75	4.14
	130.5	86.4	95.3	95.3	105.1

ELECTRICAL SCHEMATIC

3A. 6A. 10A.



20A.



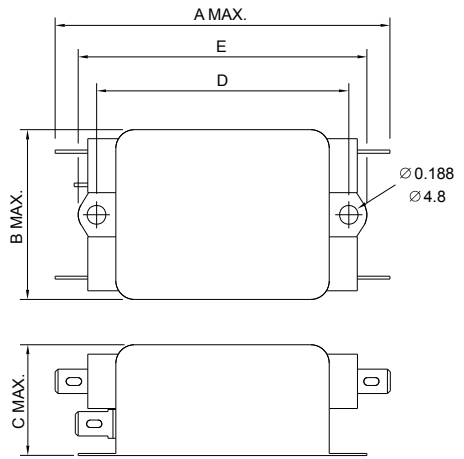
R1=330(Ohm)

MECHANICAL CONSTRUCTION

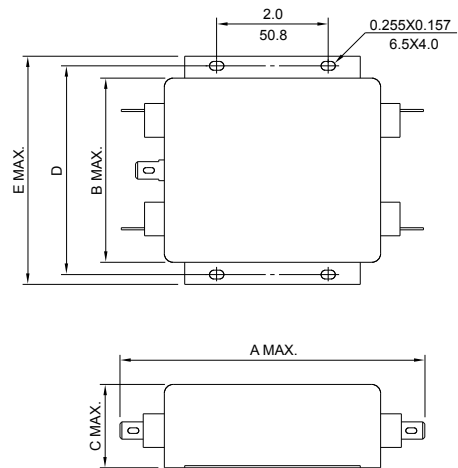
GENERAL PURPOSE TWO-STAGE FILTERS



CG5



GG5



UNIT: $\frac{\text{INCH}}{\text{mm}}$