

# DB SERIES GENERAL PURPOSE FILTERS



## INTRODUCTIONS

1. Designed as a general purpose filter providing effective EMI suppression.
2. All part numbers are UL recognized, CSA certified and VDE approved.

## COMPONENTS

PART NO.	Cx (uF)	L (mH)	Cy (pF)	R (Ω)
02DBAG5	0.1	1.1	3300	-
02DBAW5				
03DBAG5				
03DBAW5				
05DBAG5				
05DBAW5	2.9			
05DBAS5A	0.47	4.0	4700	2.2M
• 05DBDG3	0.22	2.1	-	-
• 05DBDW3				
06DBDW3S	0.47	3.7	3300	330K
10DBAG5	0.1	1.5	3300	-
10DBAW5				
10DBAS5				
10DBDW3S	0.47	1.45	3300	330K
* 10DBDG3S				
16DBDG3	1.0	3.6	10000	200K
* 16DBC5G5	2.2			
20DBAG5	0.33	0.7	3300	-
20DBAS5				
12DBBG5B	0.1	0.7	4700	1.0M
12DBBW5B				
16DBC5G5B				
16DBCW5B				
20DBC5G5B				
20DBCS5B	0.60			
30DBCS5B		0.47	0.67	10000

- UL & CSA approved only.
- \* No safety approval yet

## MINIMUM INSERTION LOSS IN dB

COMMON MODE (L-G) IN 50 OHM SYSTEM						
CURRENT RATING	FREQUENCY-MHz					
	.15	.50	1.0	5.0	10	30
2,3,5A	15	30	38	45	45	40
6A	20	25	35	40	45	35
10A	20	30	35	50	50	45
* 10A	15	22	30	40	40	45
16A(DG3)	20	30	35	45	50	35
16A(CG5)	20	30	35	50	50	40
20A	13	20	25	40	45	45
12A(BG5B)(BW5B)	10	20	22	35	40	40
16A(CG5B)(CW5B)	10	18	20	35	50	30
20A(CG5B)(CS5B)	10	20	22	30	35	35
30A(CS5B)	10	28	30	45	50	35
DIFFERENTIAL MODE (L-L) IN 50 OHM SYSTEM						
2,3,5A	6	15	20	40	45	45
6A	12	18	20	30	35	40
10A	6	15	20	44	45	45
* 10A	12	18	20	30	35	40
16A(DG3)	10	30	50	50	50	50
16A(CG5)	20	30	40	45	40	30
20A	15	24	28	45	45	45
12A(BG5B)(BW5B)	10	20	22	35	40	40
16A(CG5B)(CW5B)	5	10	15	45	45	40
20A(CG5B)(CS5B)	4	10	15	45	45	40
30A(CS5B)	12	20	25	45	50	45

\* 10DBDG3S, DW3S

## SPECIFICATIONS

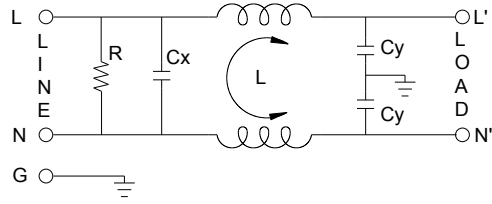
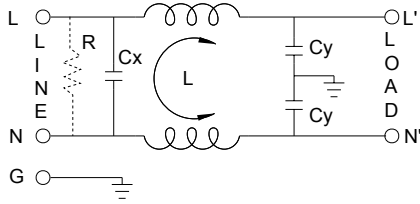
1. Maximum leakage current each  
line-to-ground @ 115VAC 60Hz: 0.25mA  
1.0mA (10000pF)  
@ 250VAC 50Hz: 0.45mA  
2.0mA (10000pF)
2. Hipot rating (one minute)  
line-to-ground: 2250VDC  
line-to-line: 1450VDC
3. Operating frequency: 50/60Hz
4. Rated voltage: 115/250VAC

## SERIES DIMENSIONS

CURRENT RATING	STYLE	DIMENSIONS IN INCHES/mm				
		A	B	C	D	E
2A	AG5	2.15	-	0.65	-	2.54
		54.6				
2A	AW5	0.96	-	-	-	-
		24.4				
3A	AG5	2.54	-	-	-	-
		64.5				
3A	AW5	33.8	1.77	0.77	2.13	2.50
		2.54	45.0	19.5	54.1	63.5
5A	AG5	2.54	-	-	-	-
		64.5				
5A	AW5	33.8	-	-	-	-
		3.37				
5A	AS5A	85.6	51.3	29.2	60.5	70.3
		2.55	2.08	1.29	1.575	0.61
6A	DW3S	64.77	52.83	32.77	40.01	15.49
		2.54	1.77	1.18	2.13	2.50
10A	AG5	64.5	-	-	-	-
		1.33				
10A	AW5	33.8	-	-	-	-
		3.10				
10A	AS5	78.7	51.3	30.0	60.5	70.3
		2.55	2.08	1.29	1.575	0.61
10A	DW3S	64.77	52.83	32.77	40.01	15.49
		3.14	2.06	1.28	1.575	0.61
10A	DG3S	79.76	53.32	32.51	40.01	15.49
		4.35	1.34	1.65	2.24	0.63
16A	DG3	110.49	34.0	42.0	57.0	16.0
		3.75	2.06	1.54	2.94	3.34
16A	CG5	95.25	52.32	39.12	74.68	84.84
		3.25	2.02	1.16	2.38	2.75
20A	AG5	82.5	51.3	29.5	60.5	69.9
		3.37	2.02	1.15	2.38	2.77
20A	AS5	85.6	51.3	29.2	60.5	70.3

CURRENT RATING	STYLE	DIMENSIONS IN INCHES/mm					
		A	B	C	D	E	F
12A	BG5B	2.13	2.54	1.34	1.77	-	-
		54.00	64.5	34.0	45.0		
16A	CG5B	2.40	2.81	1.79	2.02	1.18	-
		61.00	71.5	45.5	51.3		
20A	CW5B	2.95	3.34	2.04	2.52	-	-
		75.00	84.8	51.8	64.0		
30A	CS5B	4.06	4.49	2.22	3.74	1.83	-
		103.0	114.0	56.5	95.0	46.4	

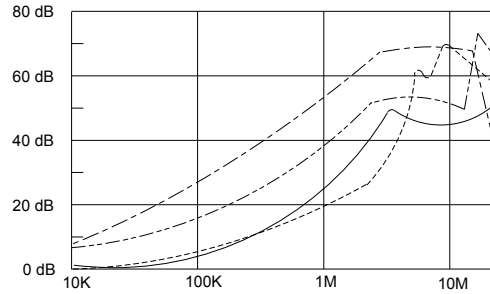
**ELECTRICAL SCHEMATIC**



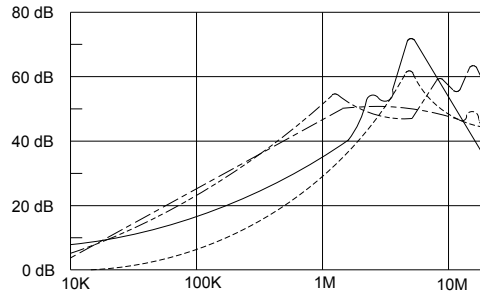
XXDBXX5B

**INSERTION LOSS (TYPICAL)**

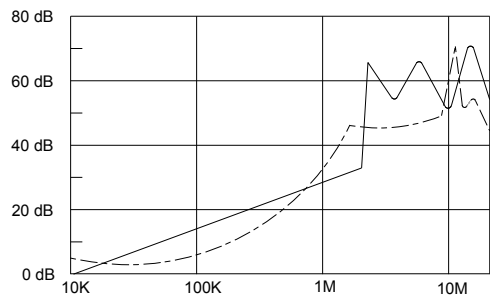
02DBAG5 --- COMMON MODE --- DIFF. MODE  
 03DBAG5 --- COMMON MODE --- DIFF. MODE



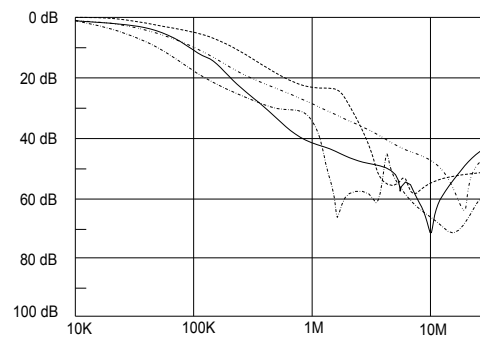
05DBAG5 --- COMMON MODE --- DIFF. MODE  
 10DBAG5 --- COMMON MODE --- DIFF. MODE



20DBAG5 --- COMMON MODE --- DIFF. MODE

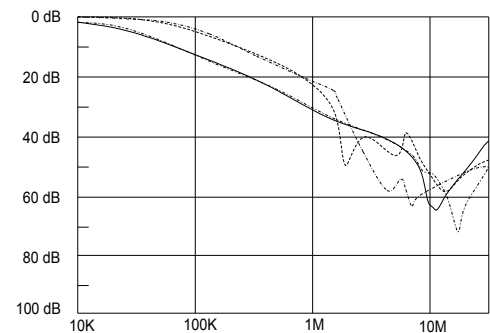


20DBC5B --- COMMON MODE --- DIFF. MODE  
 20BCS5B --- COMMON MODE --- DIFF. MODE  
 30BCS5B --- COMMON MODE --- DIFF. MODE



12DBBG5B --- COMMON MODE --- DIFF. MODE  
 12DBBW5B --- COMMON MODE --- DIFF. MODE

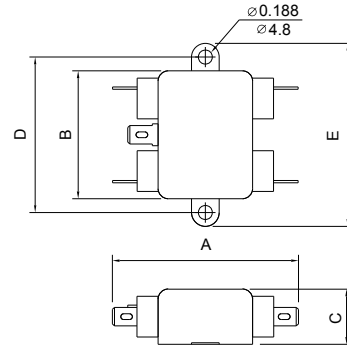
16DBC5B --- COMMON MODE --- DIFF. MODE  
 16DBCW5B --- COMMON MODE --- DIFF. MODE



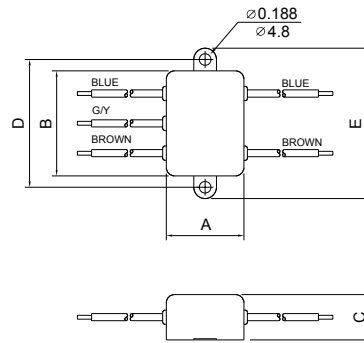
**MECHANICAL CONSTRUCTION**



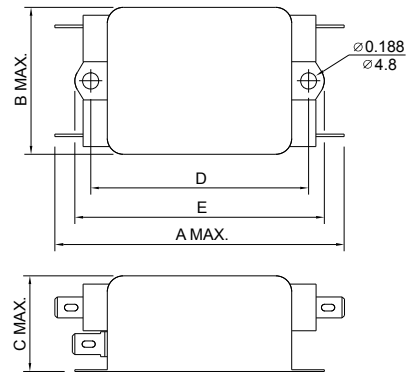
AG5



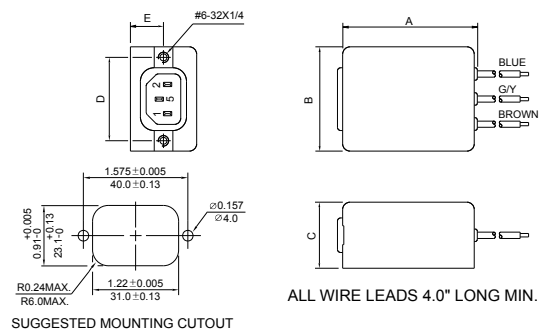
AW5



CG5



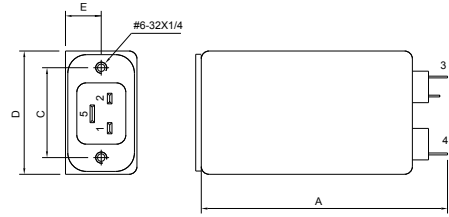
DW3S



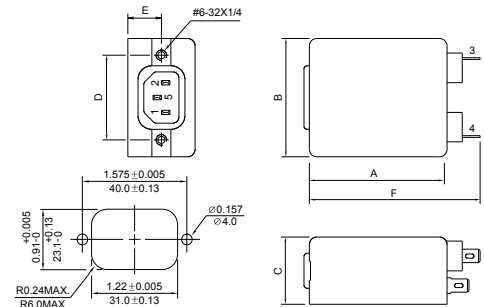
**MECHANICAL CONSTRUCTION**



DG3



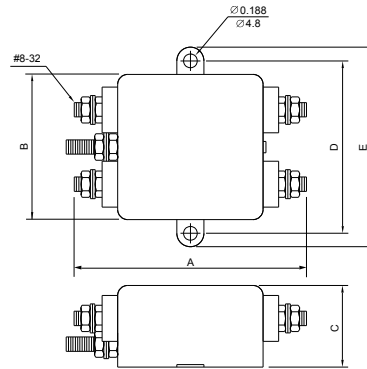
DG3S



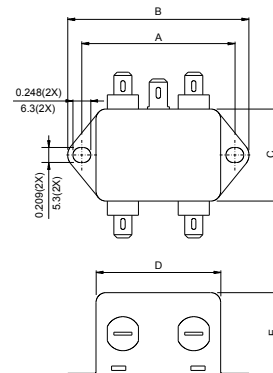
SUGGESTED MOUNTING CUTOUT



AS5



BG5B, BW5B  
 (option wire style)

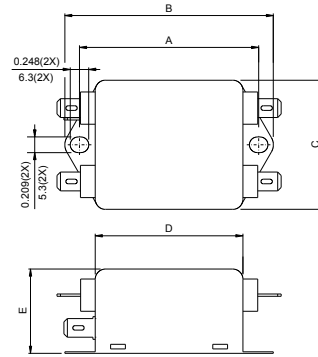


UNIT:  $\frac{\text{INCH}}{\text{mm}}$

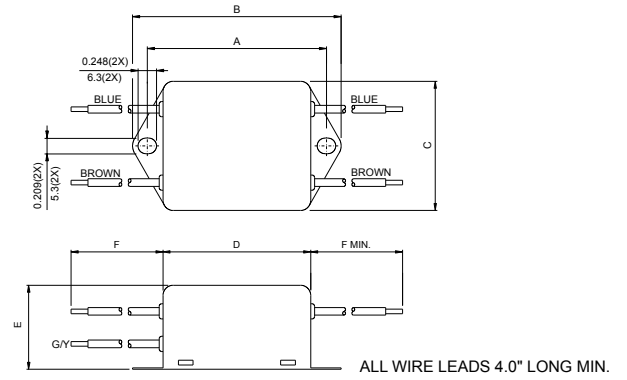
**MECHANICAL CONSTRUCTION**



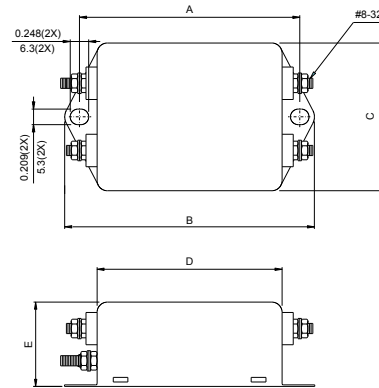
CG5B



CW5B



CS5B



UNIT:  $\frac{\text{INCH}}{\text{mm}}$