

GK SERIES MOUNTING HIGH PERFORMANCE IEC CONNECTOR FILTERS

INTRODUCTIONS

1. Specially designed with additional X capacitor providing most effective EMI suppression for low frequency noise (ranged 150KHz-500KHz).
2. Bleeder resistor can be added with suffix "-R" on part numbers.
3. With optional 3300pF Y capacitor instead of 2200pF.
4. With optional 0.1uF X capacitor instead of 0.047uF.
5. With optional solder lug connection instead of fast on terminal.
6. All part numbers are UL recongnized, CSA certified and VDE approved.

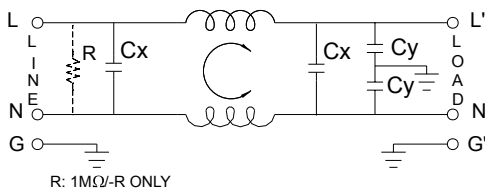
COMPONENTS

| PART NO. | L (mH) | Cx (uF) | Cy (pF) |
|-------------------|--------|---------|---------|
| 03GKEG3D/03GKEW3D | 3.1 | 0.047 | 2200 |
| 03GKEG3E/03GKEW3E | | 0.1 | |
| 06GKEG3D/06GKEW3D | | 0.047 | |
| 06GKEG3E/06GKEW3E | 1.2 | 0.1 | |
| 10GKEG3D/10GKEW3D | | 0.047 | |
| 10GKEG3E/10GKEW3E | | 0.1 | |

MINIMUM INSERTION LOSS IN dB

| COMMON MODE (L-G) IN 50 OHM SYSTEM | | | | | | |
|--|---------------|----|-----|-----|----|----|
| PART Number | FREQUENCY-MHz | | | | | |
| | .15 | 50 | 1.0 | 5.0 | 10 | 30 |
| 03GKEG3D/03GKEW3D | 20 | 25 | 30 | 40 | 40 | 50 |
| 03GKEG3E/03GKEW3E | 20 | 30 | 30 | 40 | 40 | 50 |
| 06GKEG3D/06GKEW3D | 12 | 20 | 25 | 40 | 40 | 50 |
| 06GKEG3E/06GKEW3E | 12 | 20 | 25 | 40 | 40 | 50 |
| 10GKEG3D/10GKEW3D | 5 | 10 | 15 | 30 | 40 | 50 |
| 10GKEG3E/10GKEW3E | 5 | 7 | 15 | 30 | 35 | 50 |
| DIFFERENTIAL MODE (L-L) IN 50 OHM SYSTEM | | | | | | |
| 03GKEG3D/03GKEW3D | 3 | 13 | 30 | 53 | 50 | 40 |
| 03GKEG3E/03GKEW3E | 5 | 30 | 45 | 55 | 50 | 45 |
| 06GKEG3D/06GKEW3D | 3 | 3 | 20 | 50 | 50 | 40 |
| 06GKEG3E/06GKEW3E | 7 | 20 | 35 | 50 | 50 | 45 |
| 10GKEG3D/10GKEW3D | 5 | 7 | 10 | 50 | 40 | 45 |
| 10GKEG3E/10GKEW3E | 7 | 7 | 25 | 50 | 45 | 35 |

ELECTRICAL SCHEMATIC



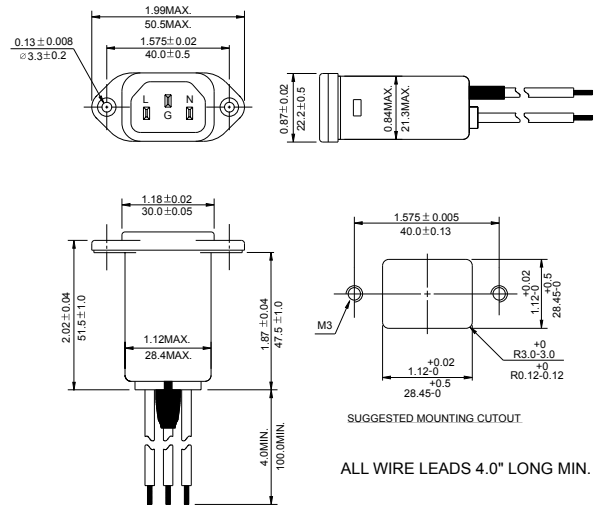
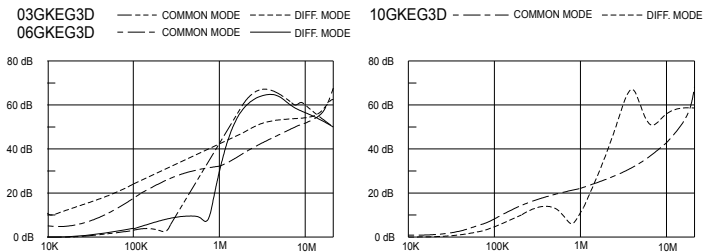
MECHANICAL CONSTRUCTION



SPECIFICATIONS

1. Maximum leakage current each line-to-ground @ 115VAC 60Hz: 0.20mA @ 250VAC 50Hz: 0.40mA
2. Hipot rating (one minute) line-to-ground: 2250VDC line-to-line: 1450VDC
3. Operating frequency: 50/60Hz
4. Rated voltage: 115/250VAC

INSERTION LOSS (TYPICAL)



W3D/W3E

G3D/G3E

UNIT: INCH/mm

GKN SERIES SNAP-IN MOUNTING HIGH PERFORMANCE IEC CONNECTOR FILTERS



INTRODUCTIONS

1. Specially designed with additional X capacitor providing most effective EMI suppression for low frequency noise (ranged 150KHz-500KHz).
2. Bleeder resistor can be added with suffix "-R" on part numbers.
3. With optional 3300pF Y capacitor instead of 2200pF.
4. With optional 0.1uF X capacitor instead of 0.047uF.
5. With optional solder lug connection instead of fast on terminal.
6. All part numbers are UL recongnized, CSA certified and VDE approved.

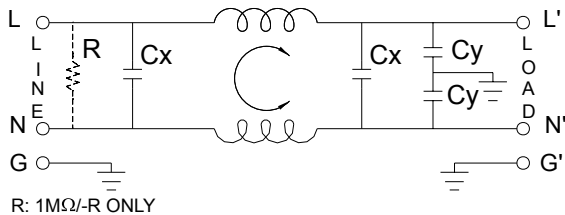
COMPONENTS

| PART Number | L (mH) | Cx (uF) | Cy (pF) |
|-------------------|--------|---------|---------|
| 03GKNG3D/03GKNW3D | 3.1 | 0.047 | 2200 |
| 03GKNG3E/03GKNW3E | | 0.1 | |
| 06GKNG3D/06GKNW3D | 1.2 | 0.047 | |
| 06GKNG3E/06GKNW3E | | 0.1 | |
| 10GKNG3D/10GKNW3D | 0.36 | 0.047 | |
| 10GKNG3E/10GKNW3E | | 0.1 | |

MINIMUM INSERTION LOSS IN dB

| PART NO. | COMMON MODE (L-G) IN 50 OHM SYSTEM | | | | | |
|-------------------|--|-----|-----|-----|----|----|
| | FREQUENCY-MHz | | | | | |
| | .15 | .50 | 1.0 | 5.0 | 10 | 30 |
| 03GKNG3D/03GKNW3D | 20 | 25 | 30 | 40 | 40 | 50 |
| 03GKNG3E/03GKNW3E | 20 | 30 | 30 | 40 | 40 | 50 |
| 06GKNG3D/06GKNW3D | 12 | 20 | 25 | 40 | 40 | 50 |
| 06GKNG3E/06GKNW3E | 12 | 20 | 25 | 40 | 40 | 50 |
| 10GKNG3D/10GKNW3D | 5 | 10 | 15 | 30 | 40 | 50 |
| 10GKNG3E/10GKNW3E | 5 | 7 | 15 | 30 | 35 | 50 |
| PART NO. | DIFFERENTIAL MODE (L-L) IN 50 OHM SYSTEM | | | | | |
| | FREQUENCY-MHz | | | | | |
| | .15 | .50 | 1.0 | 5.0 | 10 | 30 |
| 03GKNG3D/03GKNW3D | 3 | 13 | 30 | 53 | 50 | 40 |
| 03GKNG3E/03GKNW3E | 5 | 30 | 45 | 55 | 50 | 45 |
| 06GKNG3D/06GKNW3D | 3 | 3 | 20 | 50 | 50 | 40 |
| 06GKNG3E/06GKNW3E | 7 | 20 | 35 | 50 | 50 | 45 |
| 10GKNG3D/10GKNW3D | 5 | 7 | 10 | 50 | 40 | 45 |
| 10GKNG3E/10GKNW3E | 7 | 7 | 25 | 50 | 45 | 35 |

ELECTRICAL SCHEMATIC



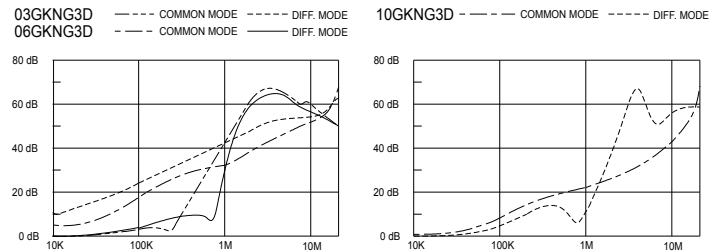
MECHANICAL CONSTRUCTION



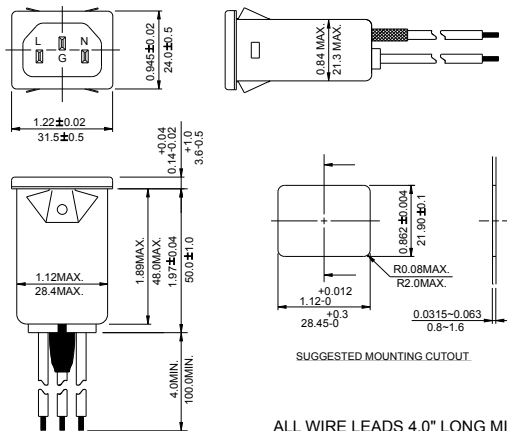
SPECIFICATIONS

1. Maximum leakage current each line-to-ground @ 115VAC 60Hz: 0.2mA @ 250VAC 50Hz: 0.4mA
2. Hipot rating (one minute) line-to-ground: 2250VDC line-to-line: 1450VDC
3. Operating frequency: 50/60Hz
4. Rated voltage: 115/250VAC

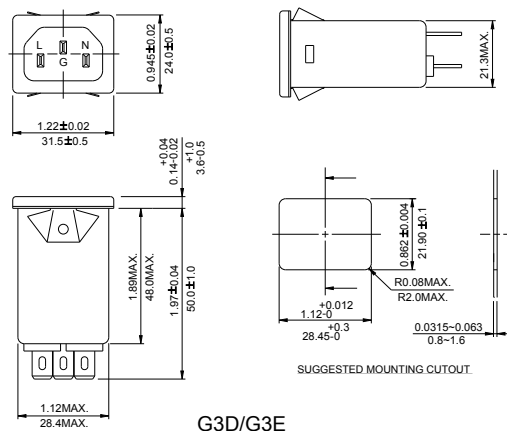
INSERTION LOSS (TYPICAL)



Suggested thickness of mounting panel is from 0.0315 (0.8) to 0.063 (1.6) inch(mm) of mounting cutout



W3D/W3E



UNIT: INCH
mm

IEC INLET FILTERS