

DV SERIES MULTI-PURPOSE POWER LINE FILTERS



INTRODUCTIONS

Two-stage filters are for susceptibility use when equipment impedance at radiation frequency is low.

COMPONENTS

PART NO.	C1 (uF)	C2 (uF)	L1 (mH)	L2 (uH)	Cy (pF)	R (Ω)
03DVCG5	0.22	0.22	1.0	30	5500	330K
06DVCG5			1.7	70		
10DVCG5			1.2	40		
20DVGG5			1.73	30		

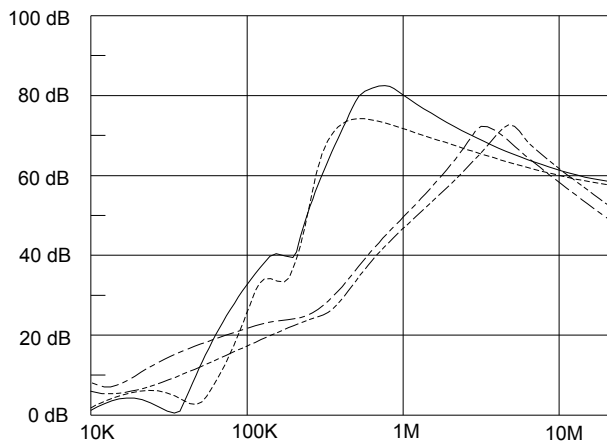
MINIMUM INSERTION LOSS IN dB

COMMON MODE (L-G) IN 50 OHM SYSTEM							
CURRENT RATING	FREQUENCY-MHz						
	.15	.50	1.0	5.0	10	30	
3A	12	25	35	50	45	40	
6A	23	38	52	67	58	46	
* 10A	10	20	30	50	45	35	
** 20A	20	20	35	50	50	35	
DIFFERENTIAL MODE (L-L) IN 50 OHM SYSTEM							
3A	30	50	60	60	70	50	
6A	25	35	50	55	55	50	
* 10A	25	55	60	60	55	55	
** 20A	10	25	35	45	45	45	

* VDE approved in 8A
** VDE approved in 16A

INSERTION LOSS (TYPICAL)

03DVCG5 --- COMMON MODE --- DIFF. MODE
06DVCG5 --- COMMON MODE --- DIFF. MODE



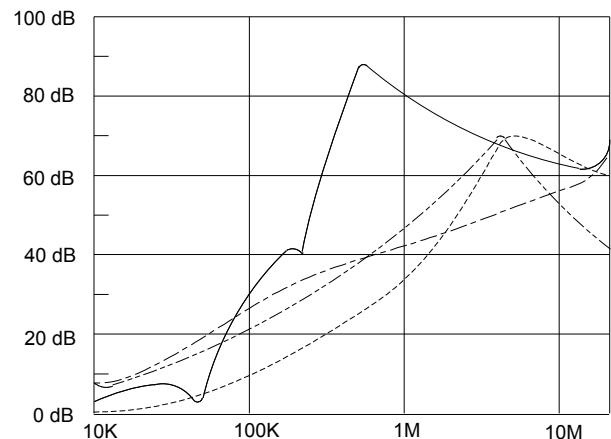
SPECIFICATIONS

- Maximum leakage current each line-to-ground: @115VAC 60Hz: 0.45mA
@250VAC 50Hz: 0.90mA
- Hipot rating (one minute)
line-to-ground: 2250VDC
line-to-line: 1450VDC
- Operating frequency: 50/60Hz
- Rated voltage: 115/250VAC

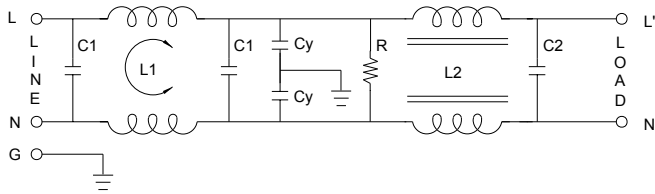
SERIES DIMENSIONS

PART NO.	DIMENSIONS IN INCHES/mm				
	A	B	C	D	E
03DVCG5	3.25	1.90	1.15	2.38	2.77
	82.5	48.3	29.2	60.5	70.4
06DVCG5	3.75	2.06	1.54	2.94	3.34
	10DVCG5	95.2		52.3	74.7
20DVGG5	5.25	3.40		39.1	3.75
	130.5	86.4	95.3	95.3	105.1

10DVCG5 --- COMMON MODE --- DIFF. MODE
20DVGG5 --- COMMON MODE --- DIFF. MODE



ELECTRICAL SCHEMATIC

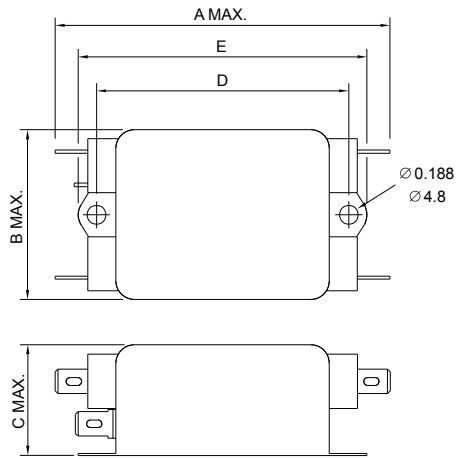


MECHANICAL CONSTRUCTION

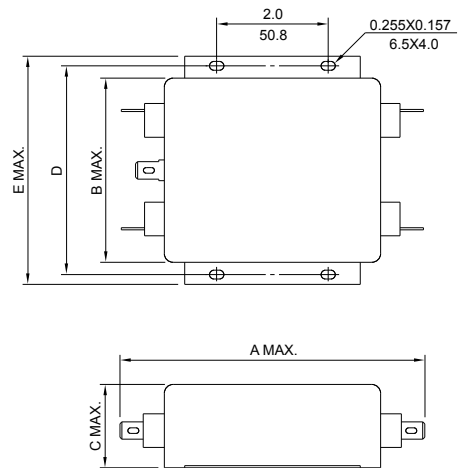
GENERAL PURPOSE TWO-STAGE FILTERS



CG5



GG5



UNIT: $\frac{\text{INCH}}{\text{mm}}$